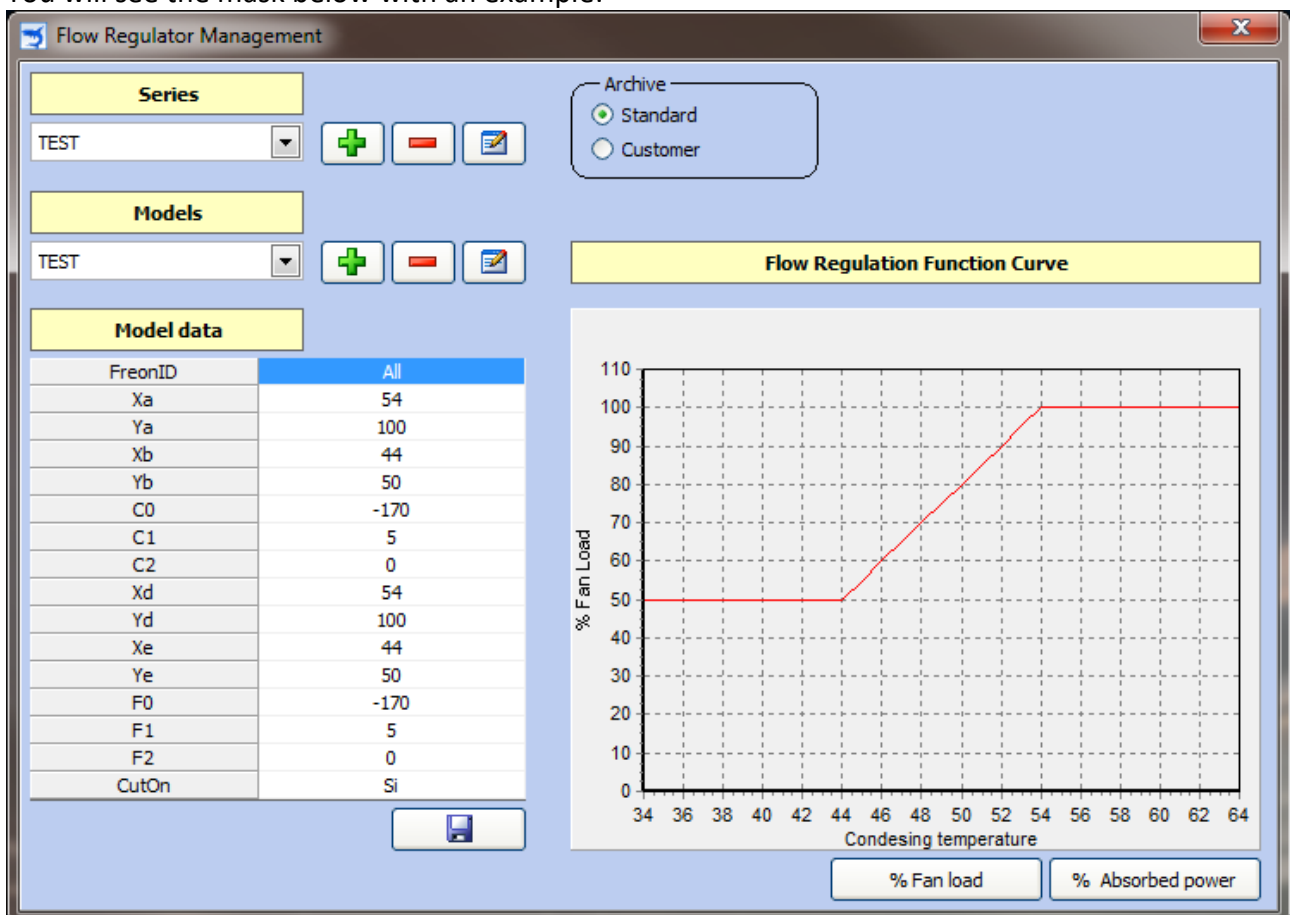


## How to insert an Airflow regulator

Click on “Archive Management” -> Airflow regulator:



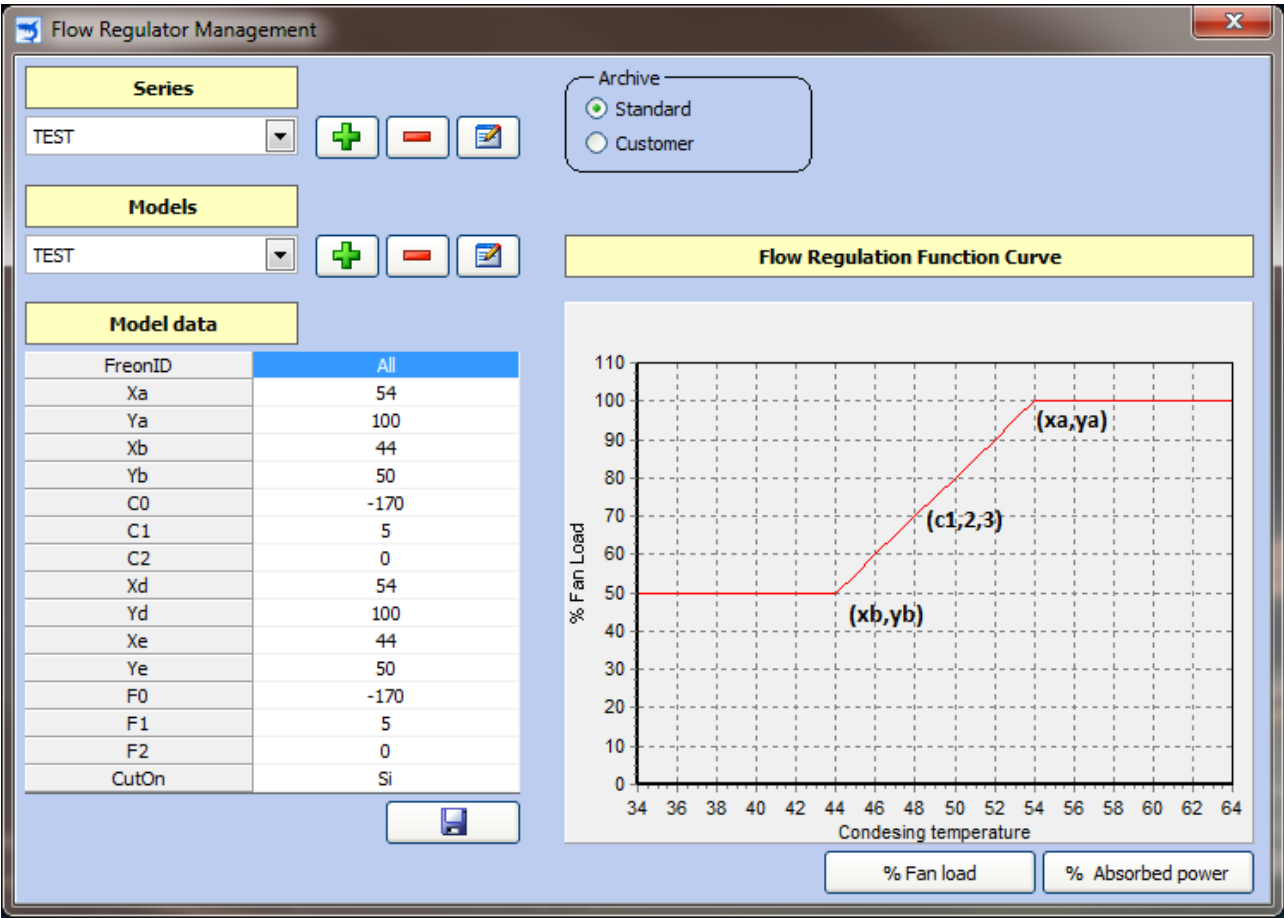
You will see the mask below with an example:



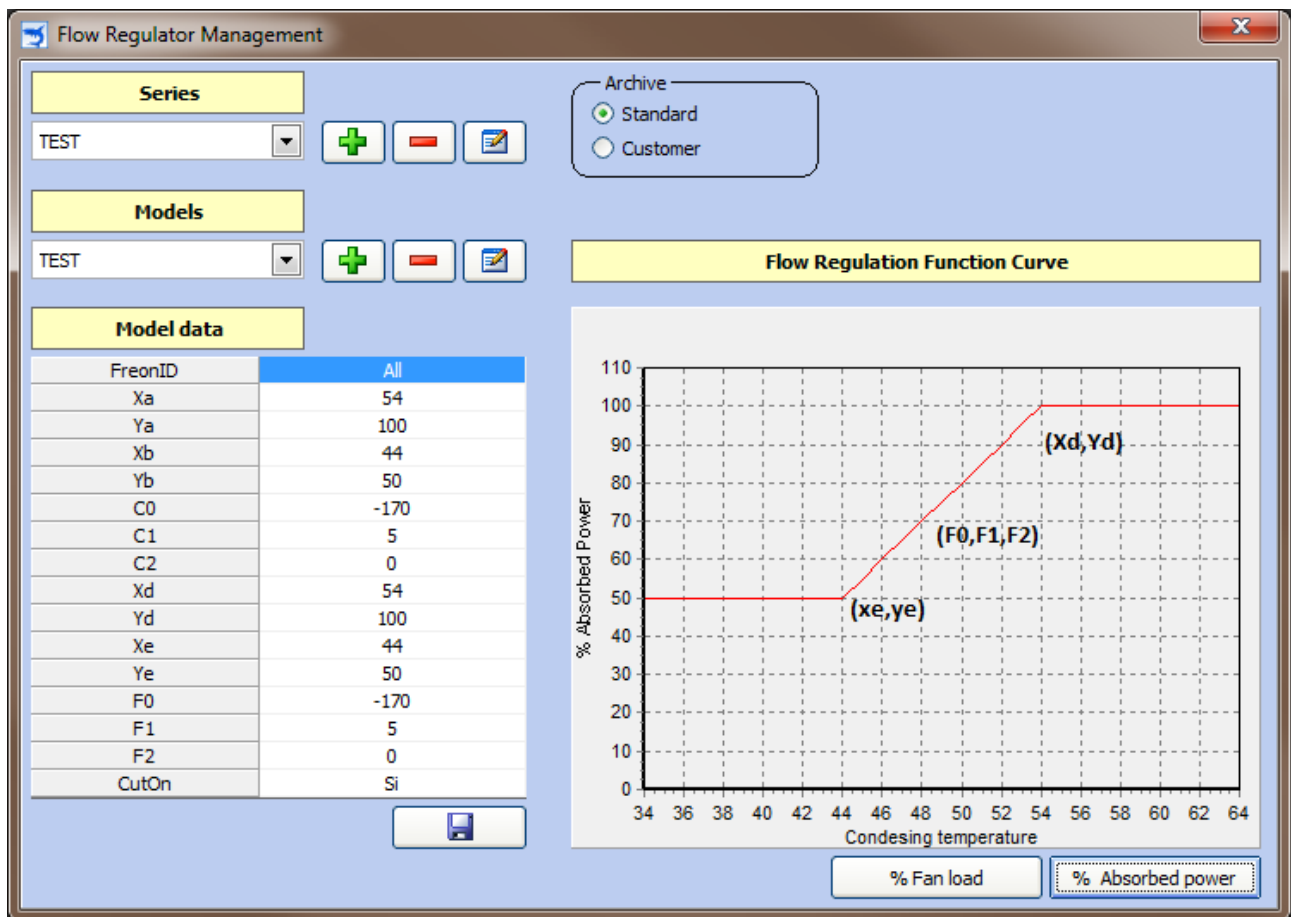
On the chart, you can see on the axis “y”, %Fan or % Absorbed power clicking on the buttons



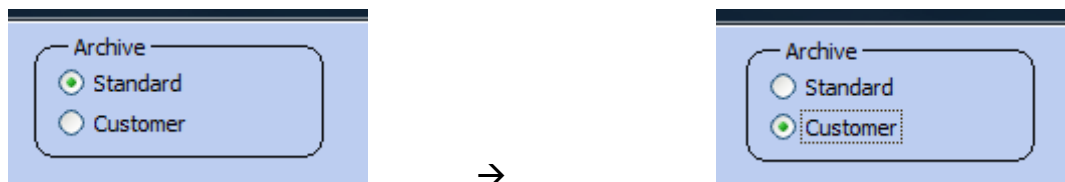
The coordiantes (xa,ya),(xb,yb), and the known terms (c0,c1,c2) refers to chart Condensing Temperature/% Fan Load.



The coordiantes (xd,yd),(xe,ye) and the known terms (F0,F1,F2) refers to chart Condensing Temperature/% Absorbed Power.



To insert a new serie and a new regulator, it is possible to insert the data in the Customer Archive.



How to insert the points in the chart.

Flow Regulator Management

**Series**

Archive

☐ Standard  
☒ Customer

**Models**


**Model data**

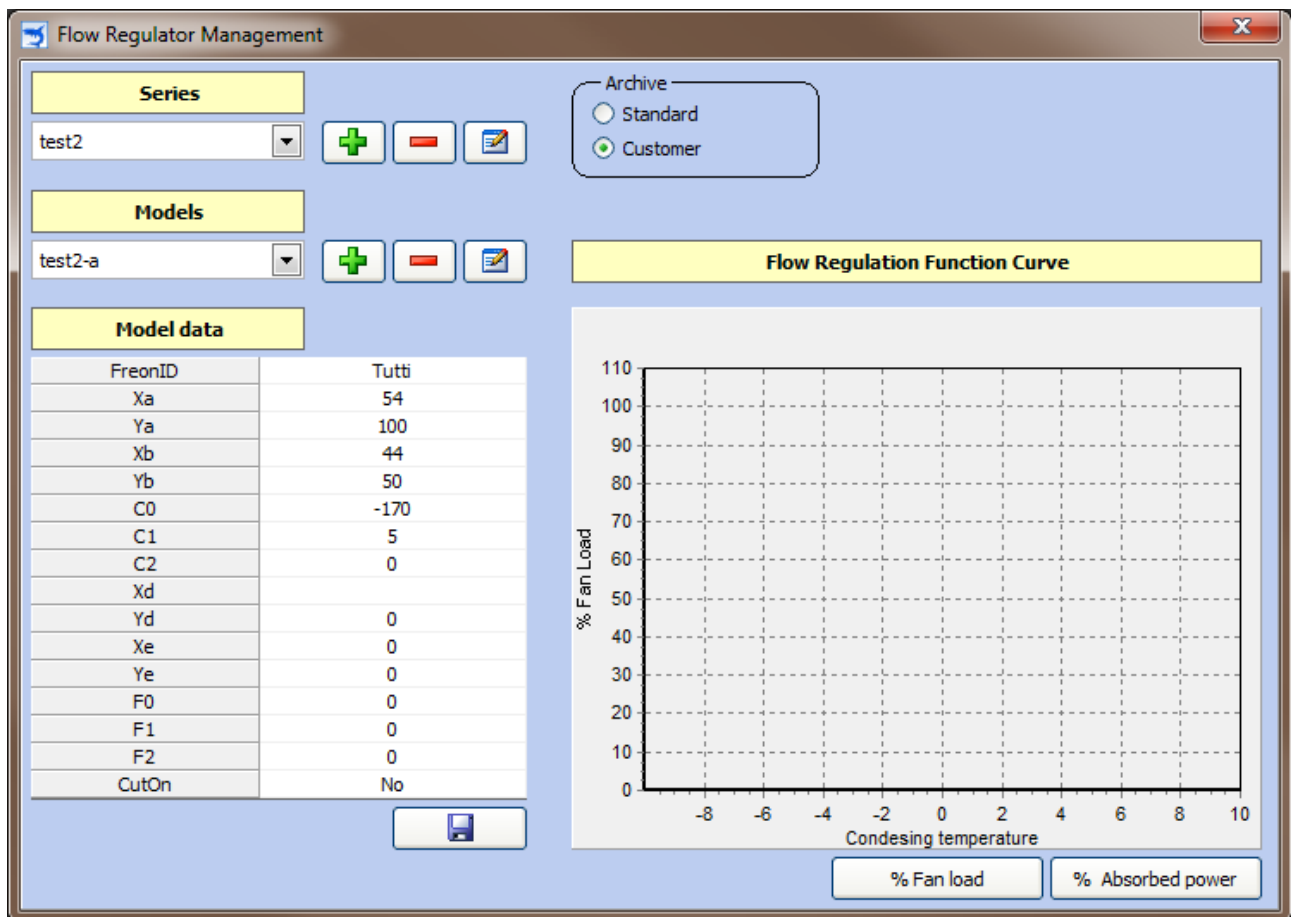
FreonID	
Xa	
Ya	
Xb	
Yb	
C0	
C1	
C2	
Xd	
Yd	
Xe	
Ye	
F0	
F1	
F2	
CutOn	

**Flow Regulation Function Curve**

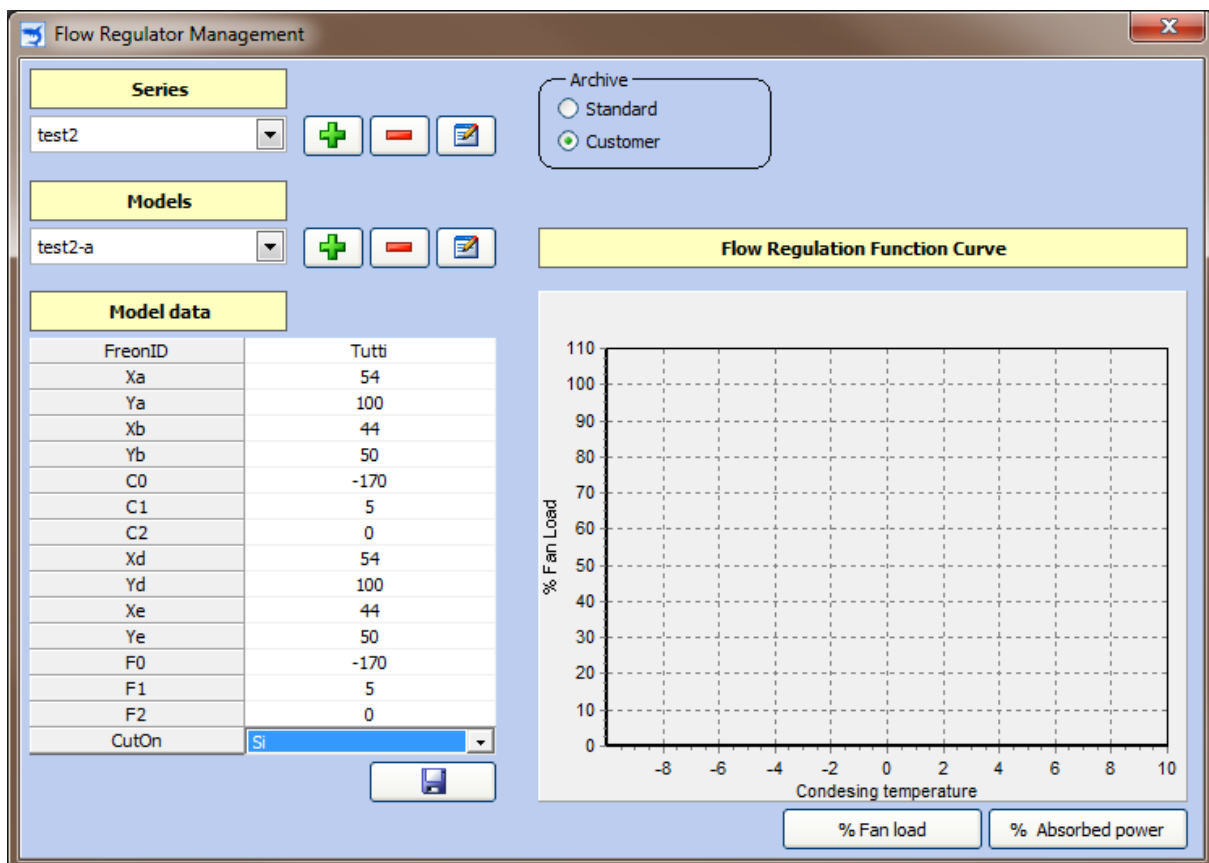
% Fan Load


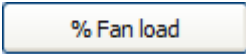
Condensing temperature

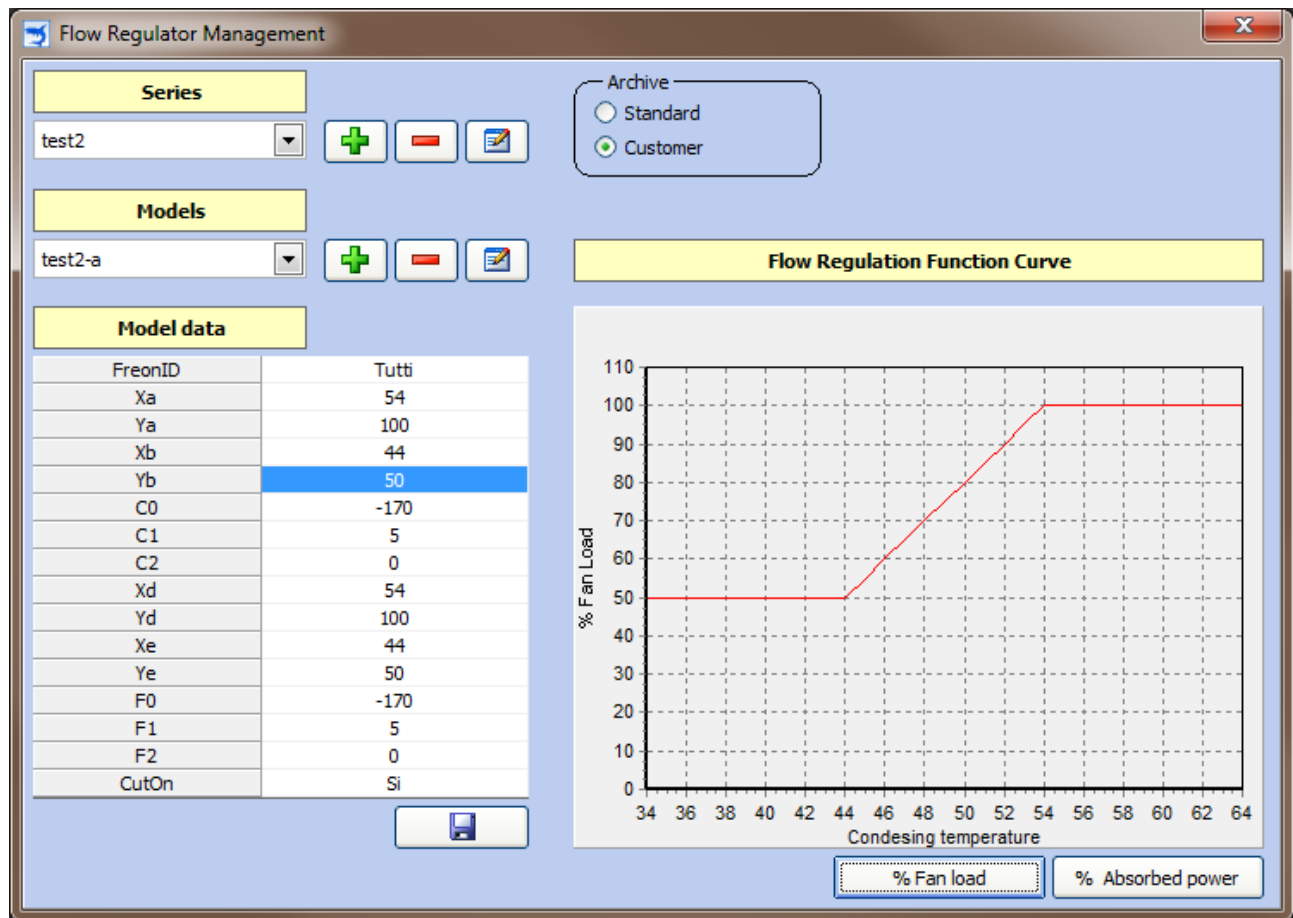
Click on the buttons  to insert SERIES and MODELS.  
 Besides, to insert the variables "a, b, C", like the example below.



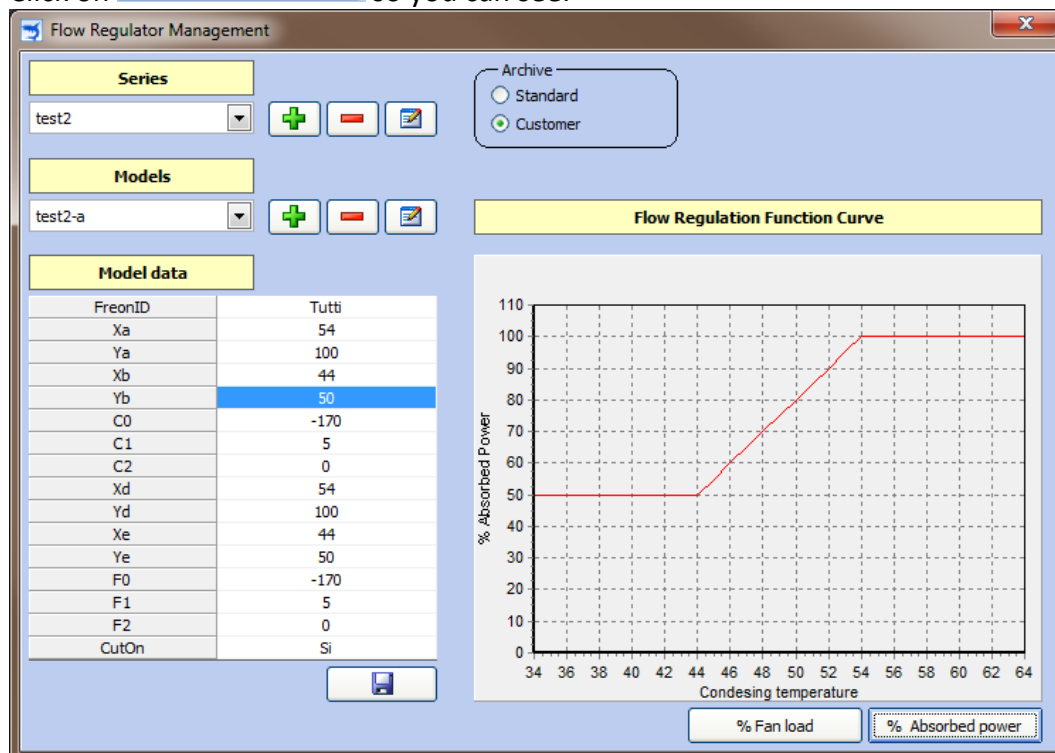
To insert also the variables " d,e,F".



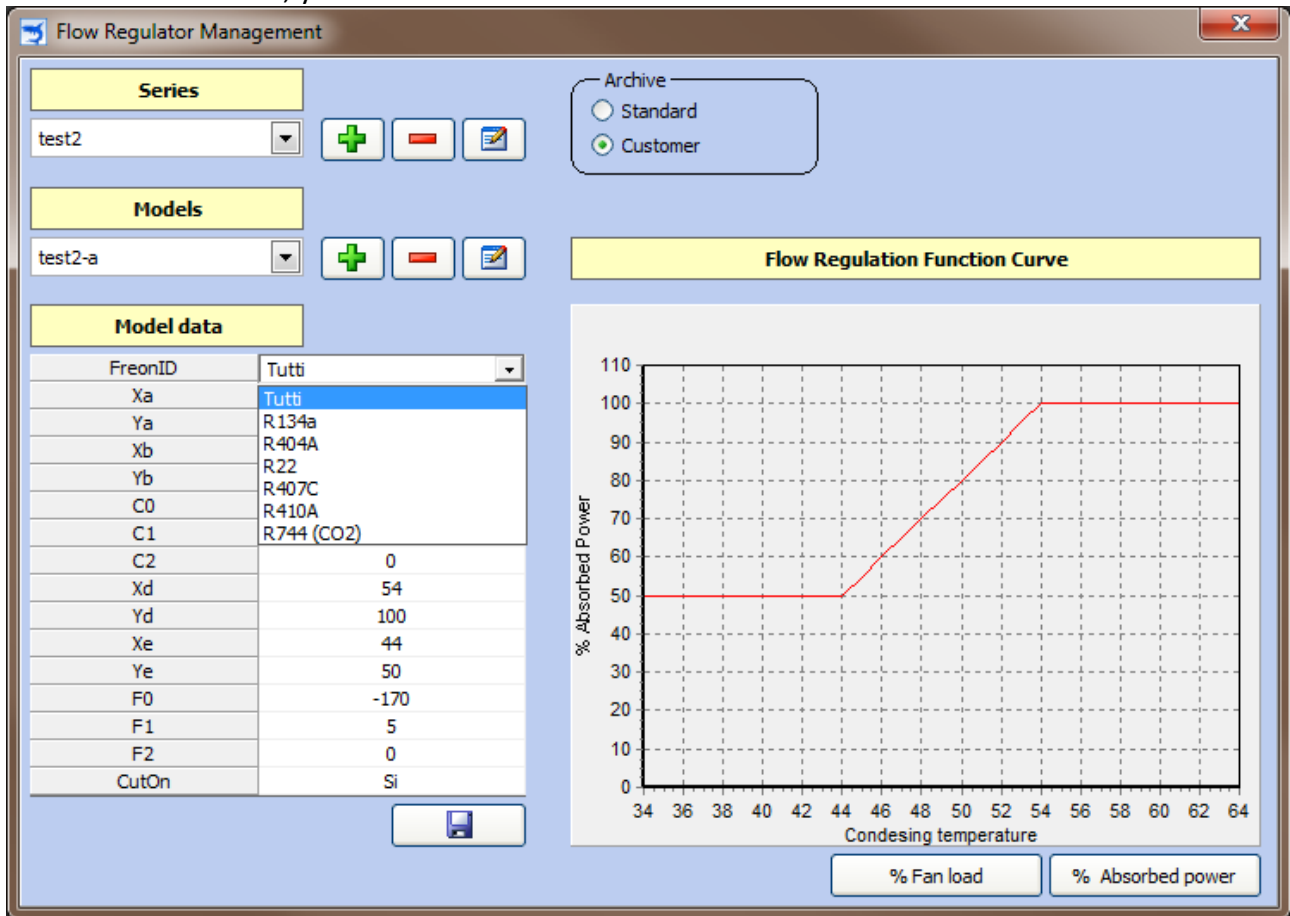
Click on  and on  so you can obtain:



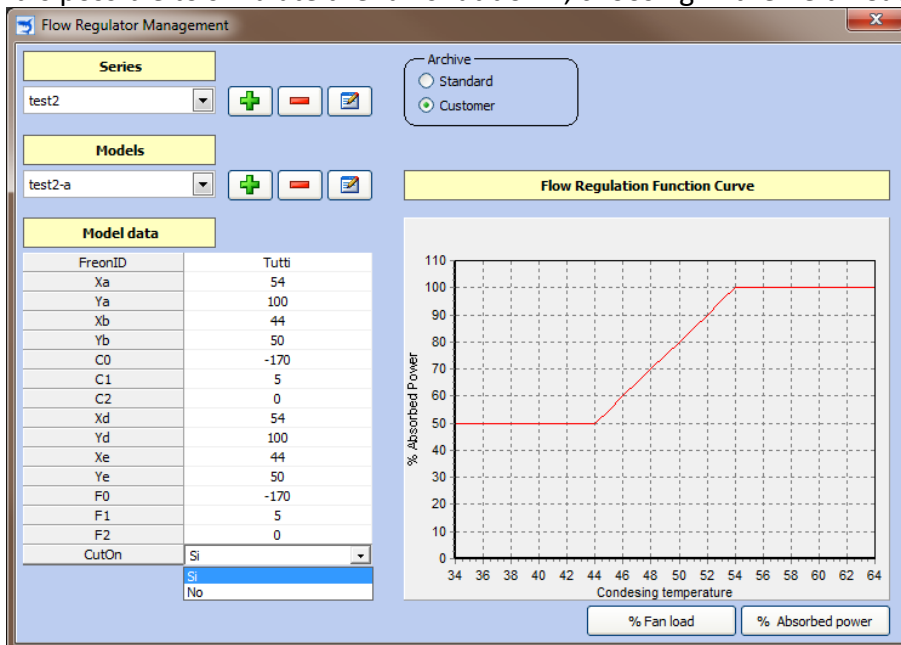
Click on  so you can see:



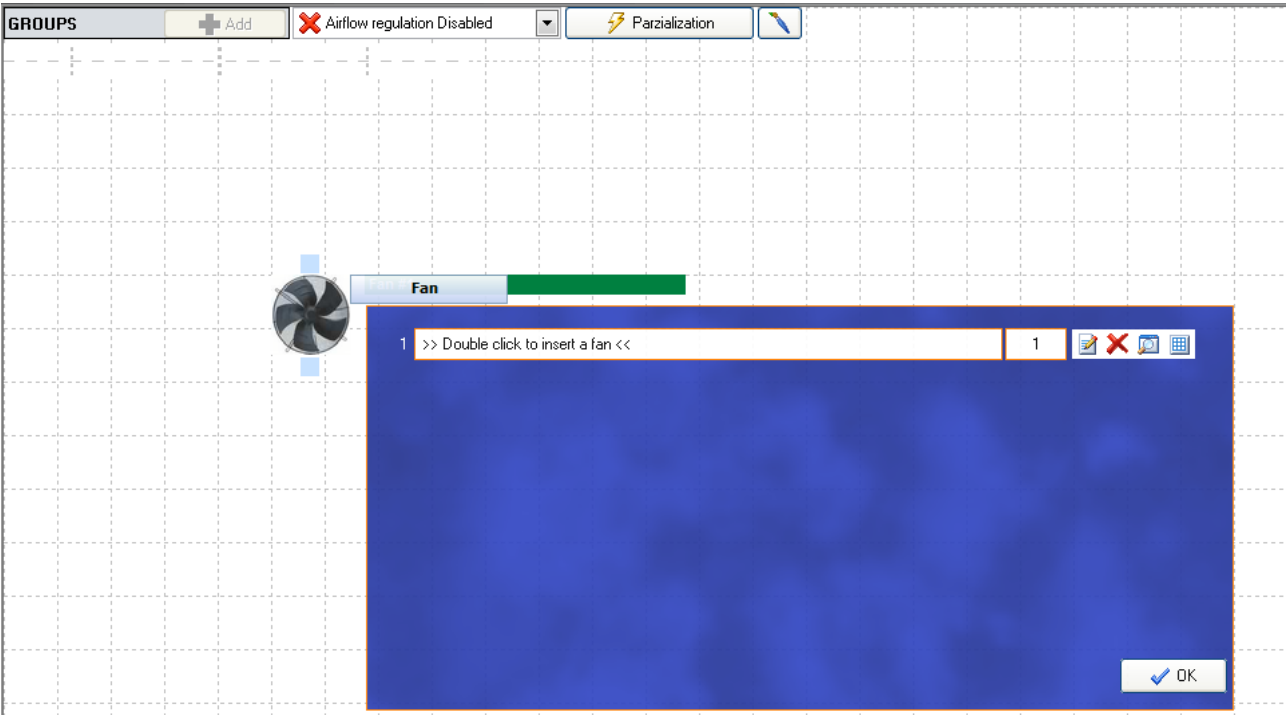
In the field “FreonID”, you can choose the freon reference or activate all:



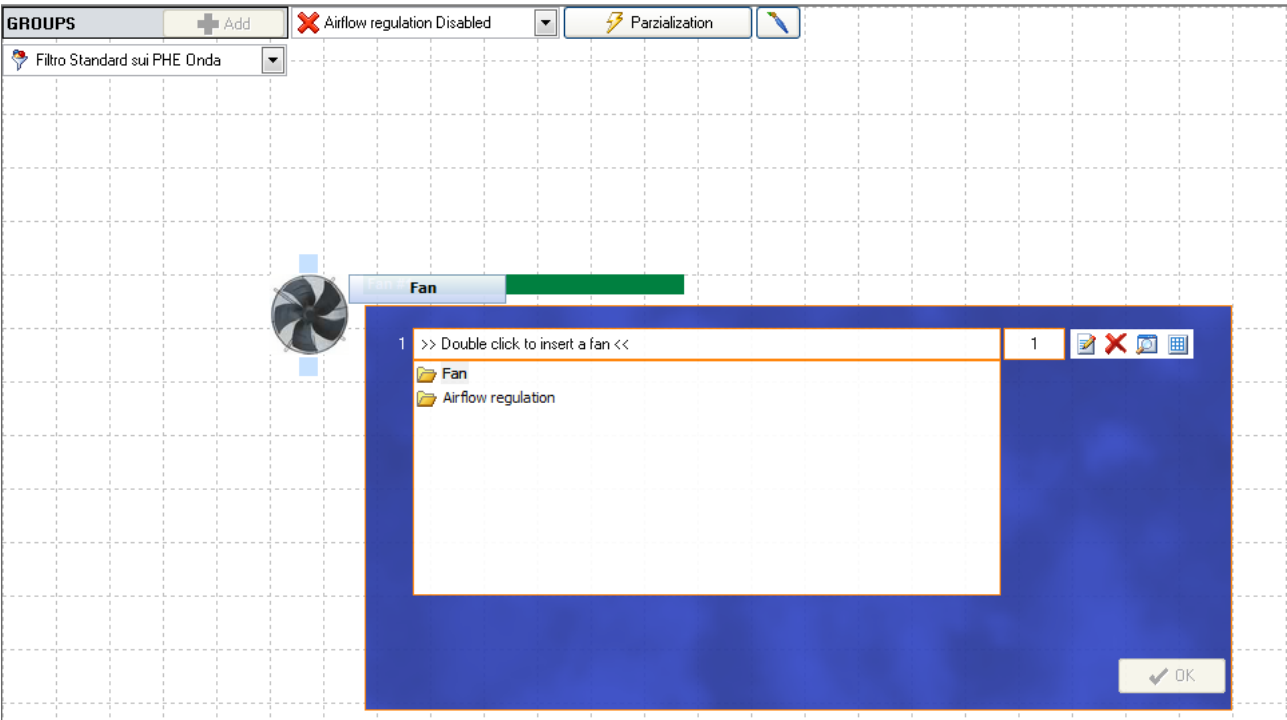
It is possible to simulate the fan shut down, choosing in the field “CutOn”, YES or NO.



To test the new airflow regulator, it is possible to insert a fan in Shark software.

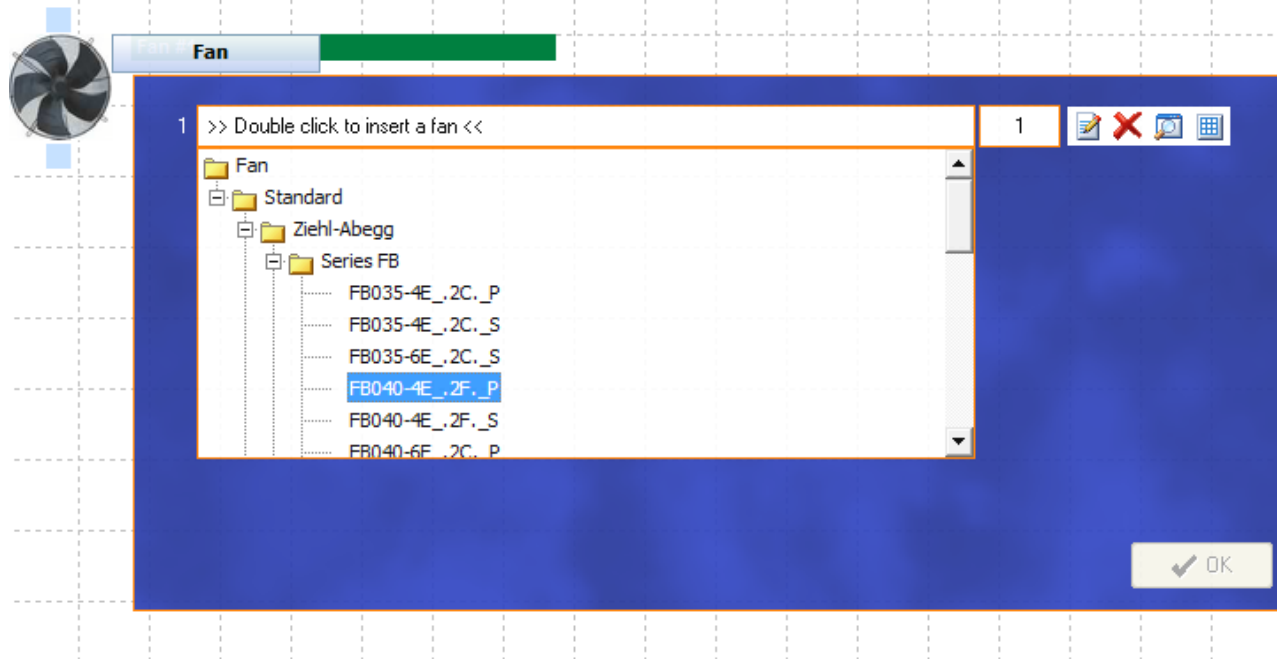


Click on “Double click to insert a fan”.

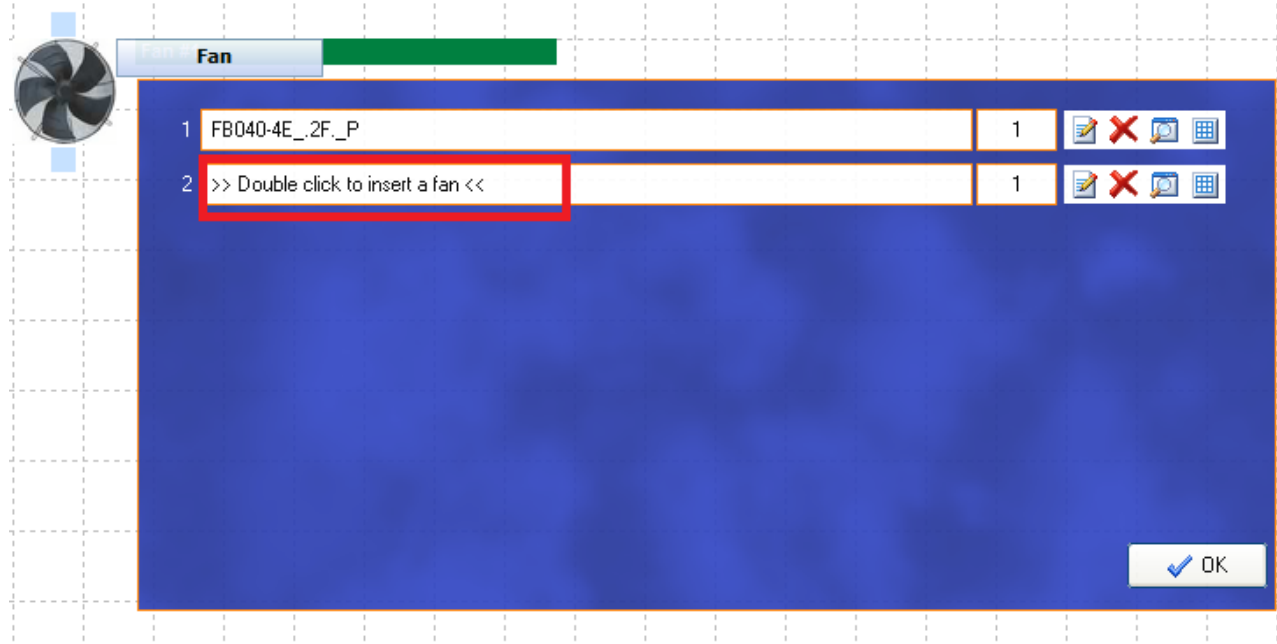




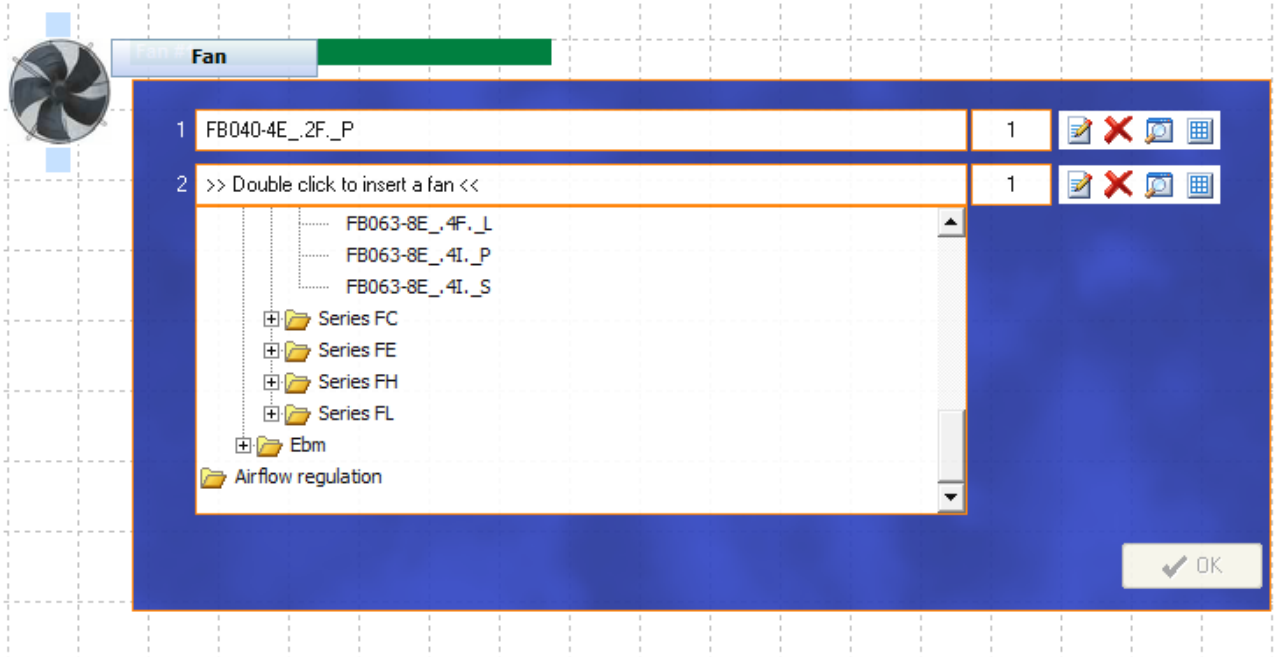
Click on “Fan” to choose a model.



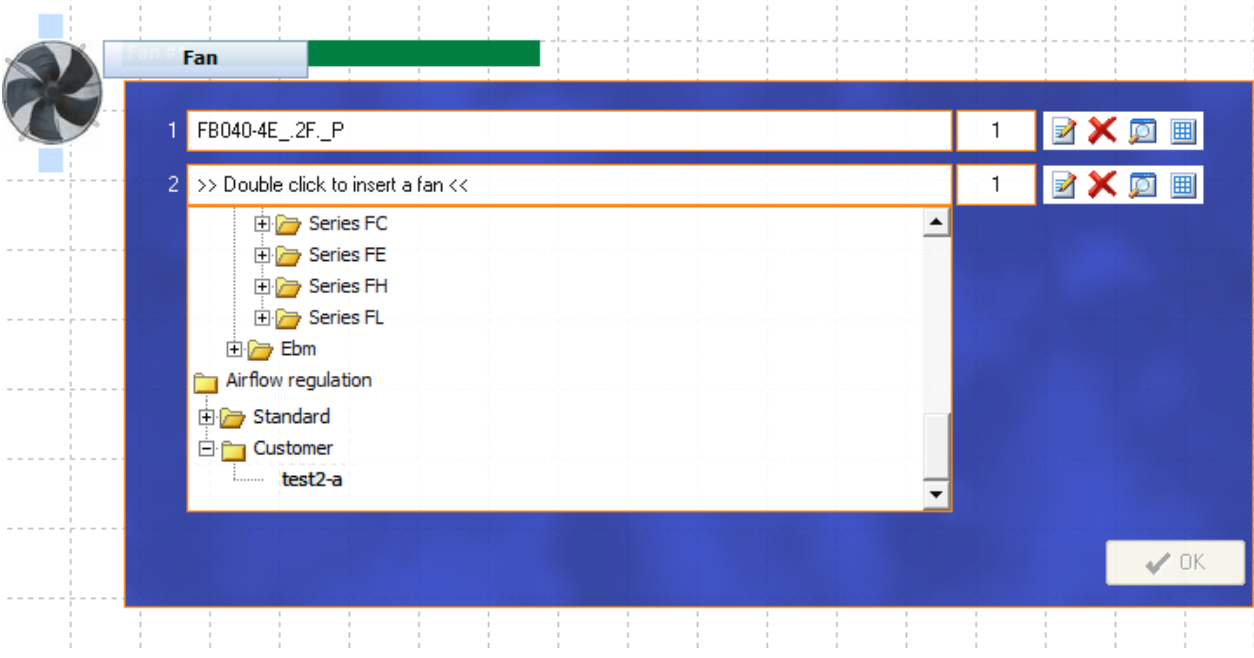
Then, click on:



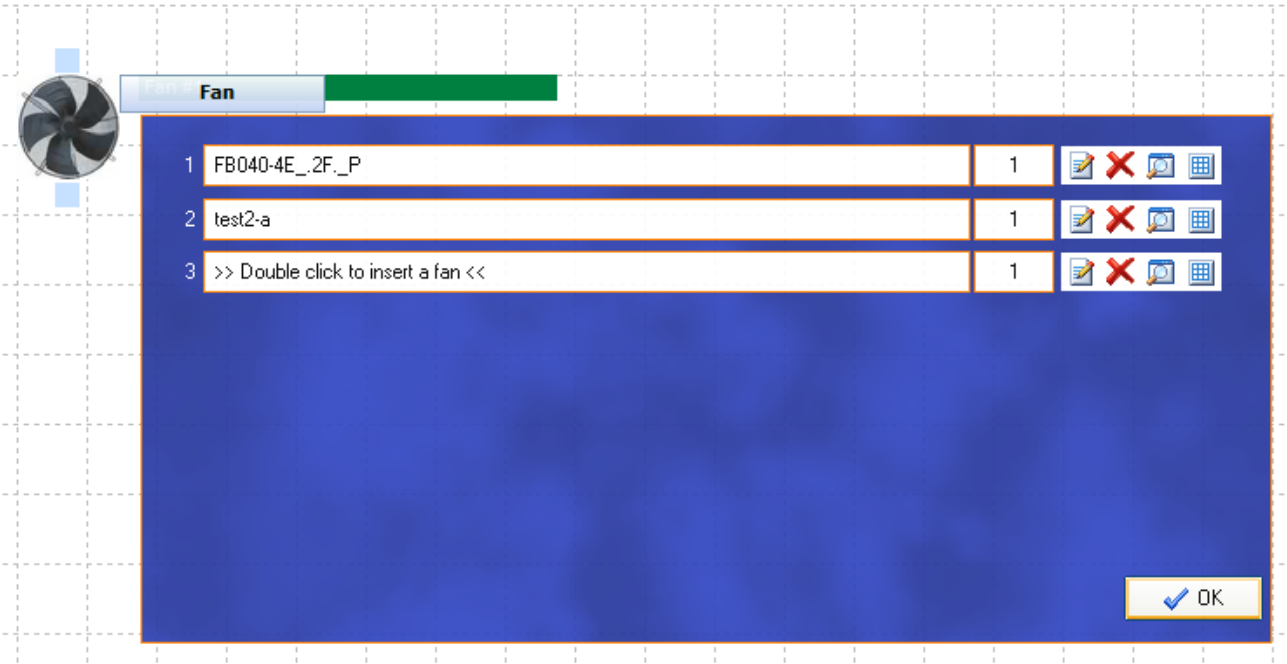
And on Airflow regulation:



Airflow regulation ->Customer-> test2-a



In the end, click on "OK"



Click to choose from "Airflow regulation Disabled" to "by Condensing Temperature".

